

PRINCIPAL PARTICULARS

Port Of Registry/Flag : Lagos, Nigeria
 Call Sign : 5NRL6
 Place Built / Year Built : ABG Shipyard, Surat, India / 2011
 Class : American Bureau Of Shipping
 Class Notation : "ABS, +A1, Towing Vessel, AH, Fire Fighting Vessel Class 1, Offshore Support Vessel, AMS, DPS1
 Type : AH/Towing & Support Vessel
 IMO / MMSI / ABS No : 9591894 / 657144100 / 11202167
 Hull No : 345
 Vessel Owner : Kotug Vier B.V.
 ISM Responsible : Starzs Investments Company Limited

**DIMENSIONS**

Length Overall : 53.00 m
 Length Waterline : 49.40 m
 Breadth Moulded : 13.80 m
 Depth Moulded : 7.00 m (Including 1m Skeg astern)
 Draft Maximum : 5.80 m (Including 1 m Skeg astern)
 GRT : 1291
 NRT : 387
 Deadweight : 890 MT @ 5.8 m draft

PERFORMANCE

Maximum Speed : 14.5 knots
 Type Of Fuel : Marine Gas Oil

CARGO CAPACITIES

Deck Cargo : 400 MT
 Deck Strength/Cargo Rails : 5.0 MT / m² / 2,0 m height
 Clear Deck Area : 260 m² (23,65m x 11,00m)
 Fuel Oil : 684,70 m³ / 1 x 80 m³/hr @ 60m head
 : 790,30 m³ including Recovered Oil tk
 Fresh Water : 259.40 m³ / 1 x 80 m³/hr @ 60m head
 Ballast Water : 242.20 m³ / 1 x 80 m³/hr @ 60m head
 Freezer : 10 m³ (-18 ° C temperature)
 Chiller : 10 m³ (+14 ° C temperature)
 FiFi foam tank : 23.1m³
 Dispersant tank : 23.1m³
 Recovered Oil tank : 105.6m³ (Combined fuel tank) Waste
 Oil tank : 6,4m³

DP 1 DYNAMIC POSITIONING SYSTEM

DP System : Navis NavDP 4000 (DP I)
 2 separate DGPS (2 x VERIPOS)
 2 Wind Sensor
 1 Motion Reference System
 2 Gyrocompass
 2 UPS
 1 Control Station + 2 Computers
 Joystick and DP System

SYSTEM

Main Engine : 2 x 2720 kW (3648 bhp) WARTSILA 8L26
 Main Generator : 2 x 350 kW Caterpillar
 Emergency Generator : 1 x 84 kW Caterpillar 3056
 Shaft Alternator : 2 x 600kW Leroy Somer
 Bow Thruster : 1 x 550 kW (750 bhp) (8 MT) HRP
 Propulsion : 2 x Azimuth Thrusters WARTSILA
 : 4 BLADES CPP dia 2,8 m

DECK EQUIPMENT

Anchor Windlass/ Towing : 1x el-hyd 40mm abt 6,8ts/10m/min
 Anchor : 2 x 1200 kg High Hold Type, Bow
 Anchor Chain : 300 m x dia 40 mm port & stbd Deck
 Crane : 1 x Knuckle Boom Type, 5 MT @
 16 m & 10 MT @ 11 m Radius

FIGHTING EQUIPMENT(External)

Fi-Fi : Fire Fighting Class 1
 Fire Pump : 2 x 1500 m³/hr @ 750 kW
 Fire Monitor : 2 x 1200 m³/hr @ 12 bar
 Throw Length : 120 m

FIRE FIGHTING EQUIPMENT(Internal)

Fixed System in E/R: CO2 system in engine room
 Fire Detection System: All living places and engine room
 Emergency fire pump: 25 m³/hr x 45 m head

OTHERS

Water Maker : 1 x 5 MT / day Sailor C 1500
 Reefer points on main deck : 6 x 415V,32A. El output 1x220V, 16A
 Spray booms : 8 m outreach P&S main deck

TOWING & ANCHOR HANDLING EQUIPMENT

Bollard Pull Ahead/Stern : 92 MT / 89 MT
 Tow/AH Winch NORCRANE: Double Drum Waterfall Type
 Upper Drum - dia 56mm x 1000 m
 Lower Drum - dia 56mm x 150 m
 Tow / AH Pull (1stlayer) : 100 MT @ 6 m/ min – Low Speed
 : 50 MT @ 12 m/ min – Mid Speed
 : 24 MT @ 24 m/ min – High Speed
 Brake Holding Capacity : 225 MT
 Bow Winch : 90 MT @ 0-6 m/ min
 Brake Capacity : 225 MT
 Wire length : 600 m x 58mm
 Remote control from aft console in wheelhouse & Local Control
 Storage Reel : Dia 56mm X 1000 m, 10 MT
 Stern Roller : 2.2 m dia x 4.5 m length, SWL 200 MT
 Shark Jaw : 1 x Karm Fork SWL 300 MT
 Tow Pins : 2 x el-hyd Karmoy, SWL 300 MT
 Tugger winch : 2x10 MT/15 MT brake, ø200m x25mm
 Capstans : 2 x 5 MT

NAVIGATION & COMMUNICATION

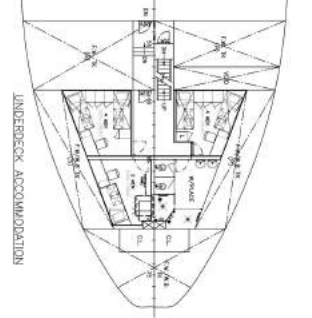
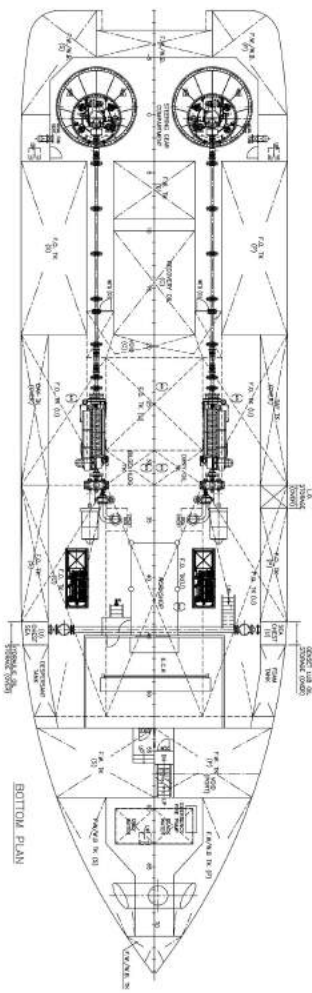
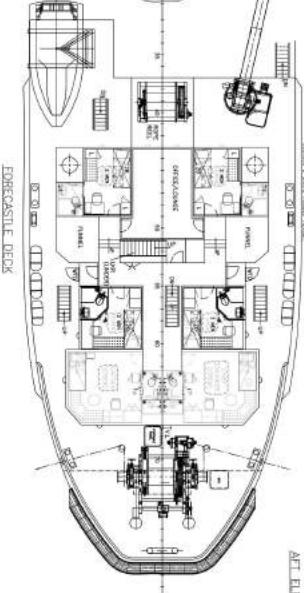
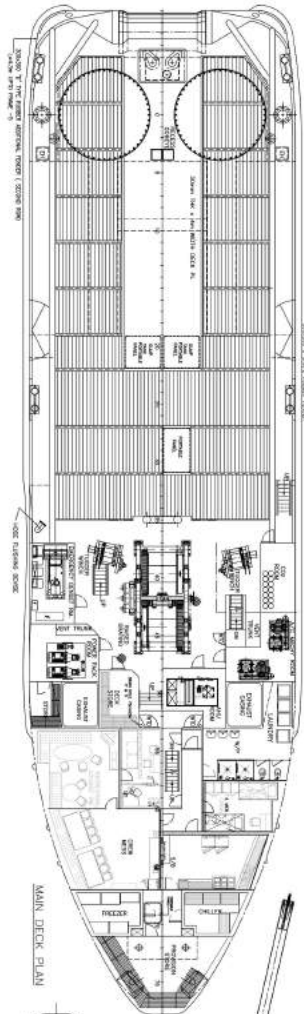
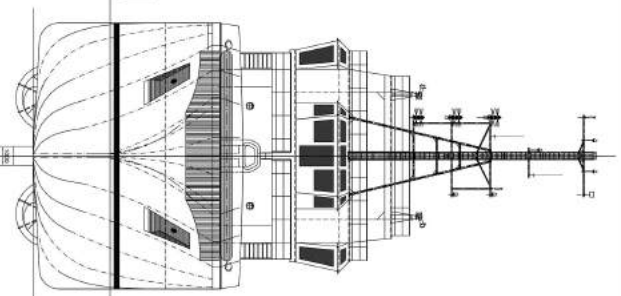
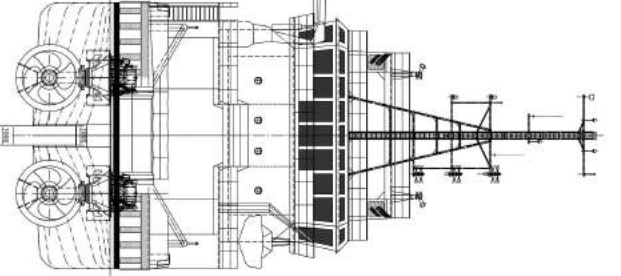
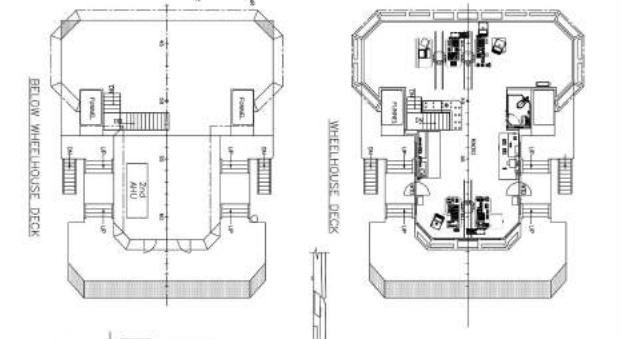
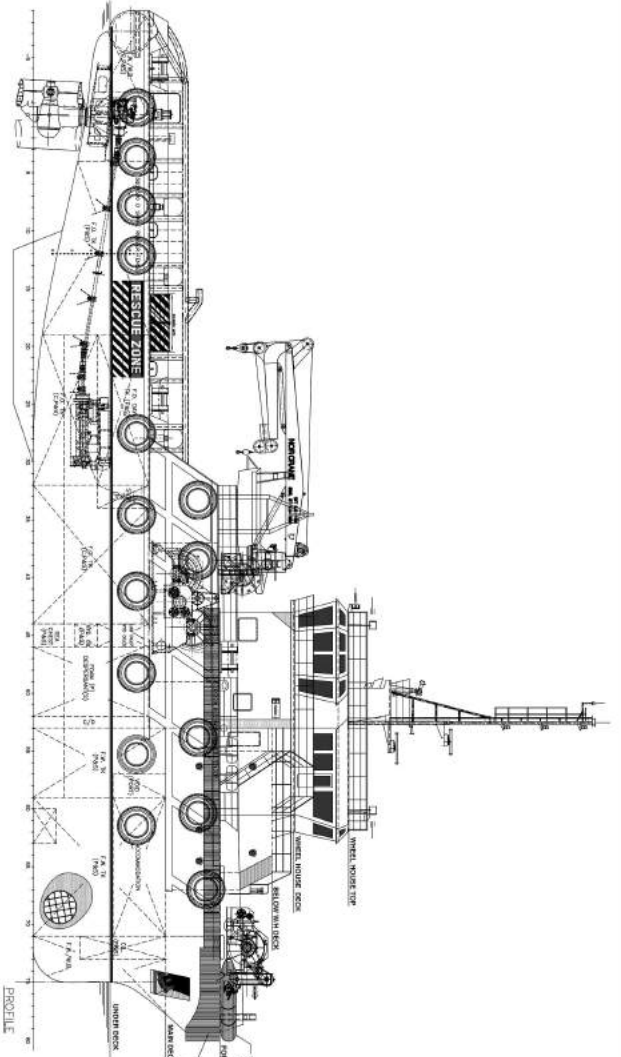
MF/HF DSC : 1 x JRC-NCT-196N DSC/NBDP
 SART : 2 x JOTRON – TRON SART20
 MF/HF Radiotelephone : JRC – JSB-196GM
 Inmarsat C : JRC – JUE-85 INM-C Receiver
 V-SAT : Ship Equip – 1W1030019797
 FLEET 77 phone/fax : JRC – JUE-410F
 EPIRB : 1 x ACR – RLB-38
 VHF Emergency portable : 3 x JRC – JHS-7
 VHF portable : 3 x Vertex Standard - HX370S
 VHF Radio fixed : 4 x JRC NCM 1770
 UHF : 3 x Standard-HX370S
 UHF : 3 x Motorola-GP328
 Navtex Receiver : 1 x JRC – NCR-333 Navtex receiver
 X & S Band Radar : 1 x JRC of each
 Echo Sounder : 1 x JRC – JFE-680
 DGPS 1 + DGPS 2 : 1 x Veripos LD2S + 1xVeripos LED3S
 Gyrocompass : 1 x Anschutz – STD-22
 Auto Pilot : 1 x ANSCHUETZ Pilot Star D
 Speed Log : 1 x JRC – JLN-205
 Magnetic Compass : 1 x Raytheon
 AIS : 1 x JRC – JHS-182

ACCOMODATIONS

Berths (Air conditioned) : Crew 2x1+4x2+1x4. Passeng 1x2+2x4
 Hospital : 1 x 1 Berth Cabin

LIFE SAVING APPLIANCE

Life Rafts : 4 x 25 Men SOLAS type
 Life Buoys/Jackets : 8 pcs / 30 pcs
 Immersion Suits : 24 pcs
 Emergency Escape : 8 x Emergency Escape + 1 for
 : Training EEBDS
 Fast Rescue Boat (FRC) : Jiangyin Neptune Marine, 6 persons
 : 6m x 2,3m, 60HP Mercury outboard
 : Including Pivoting Davit
 Rescue Zones : P+S side mid ships on main deck
 Scrambling nets : 2 P+S side



PRINCIPAL PARTICULARS

LENGTH O.A.	53.00m
LENGTH W.C.	49.00m
BREADTH	10.00m
DEPTH MLD	6.00m (approx.)
DRAFT RESIDUAL/MAX	4.00m/4.80m
F.W./A.B.	500m ³ (approx.)
TOTAL	200m ³ (approx.)
DISPLACMT	250m ³ (approx.)
CLON DECK	12m ² (approx.)
SPRUE	12m ² (approx.)
	20m ²

CREW CAPACITY: 14 MEN
SPARE CREW: 10 MEN
MAX CREW: 24 MEN